



iFIX

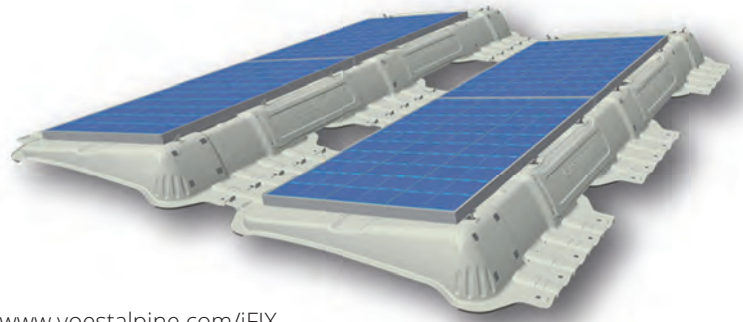
The Fast and Easy
PV Flat Roof Mounting System

Technical Data Sheet

Version February 1st, 2018

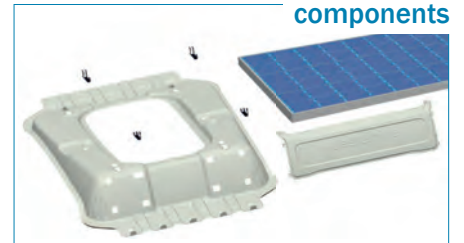


Technical Data



Detailed information is available at mounting instructions on: www.voestalpine.com/iFIX

Requirements	Roof inclination maximum 5° Permissible roof skins: Bitumen, plastic foil, gravel. No permanent ponding water on the roof. Wind load zones 1 to 3 (min. distance to shore 3 km) maximum peak velocity pressure 1150 N/m ² Pressure load up to 5.4 kN/m ² Building height: up to 25 m
---------------------	---



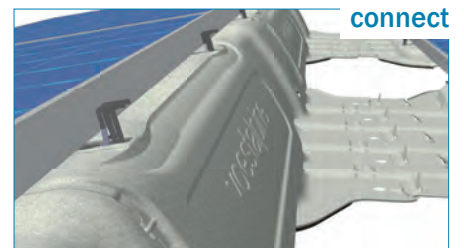
Areaload	4.47 kg/m ² inclusive protection mats and clamps, without PV and weighting
-----------------	---



Module direction	horizontal
-------------------------	------------

Usable PV modules with frame size	minimum 1.638 x 982 mm maximum 1.675 x 1.000 mm Lower horizontal mounting flange required
--	---

Grid dimension in row	PV module length +10 mm (maximum 1.685 mm) To calculate length of row, add 400 mm for end sections.
------------------------------	--

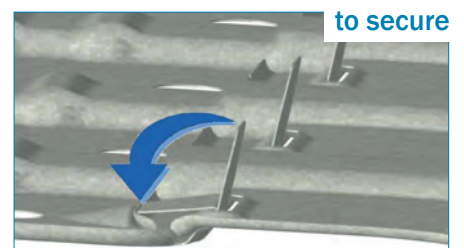


Grid dimension between rows	1.590 mm at 16° shading angle 1.519 mm at 18° shading angle
------------------------------------	--

Height	maximum 231 mm (without PV module)
---------------	------------------------------------

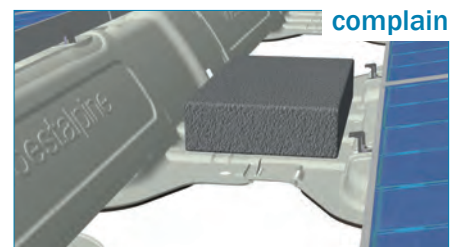
Module angle	10°
---------------------	-----

Shading angle	selectable 16° or 18°
----------------------	-----------------------



Material	Sheet parts made of corrosion protected aluminum-zinc-coated steel sheet Lever clamps: stainless steel
-----------------	---

Certificates, tests, standards:	Since June 2017: general building supervisory approval of the German Institute for Structural Engineering (DIBt) Wind tunnel expertise Static according to eurocode tested lightning current load capacity according to DIN EN 50164-1 and DIN EN 62305-3
--	--



Distribution:



Manufacturer contact:
voestalpine Automotive Components Schwäbisch Gmünd GmbH & Co.KG
 Marcus Wiemann
 T. +49/7171/972-360
 F. +49/7171/972-321
marcus.wiemann@voestalpine.com
www.voestalpine.com/ac

Industrial Representation Europe:
iFIX-SOLAR GmbH
 photovoltaic wholesale
 Gewerbepark 19
 A-4101 Feldkirchen / Donau
 +43 (0)7233 / 80 57 050
office@ifix-solar.at
www.ifix-solar.at